



Access to Vaccination through Community Pharmacy

Jan De Belie MPharm

Professional Affairs Advisor, PGEU



01

Introduction

Pharmaceutical Group of European Union

Members: Professional Bodies & Pharmacists' Associations



2018: 32 Countries

	Austria		Malta
	Belgium		Netherlands
	Bulgaria		Poland
	Cyprus		Portugal
	Czech Rep		Romania
	Denmark		Slovakia
	Estonia		Slovenia
	Finland		Spain
	France		Sweden
	Germany		United Kingdom
	Greece		Croatia
	Hungary		FYR Macedonia
	Ireland		Norway
	Italy		Serbia
	Latvia		Switzerland
	Luxembourg		Turkey



1959

2016

400.000
Community
Pharmacists

170.000
Pharmacies

46 million
citizens visit a
pharmacy every day



PGEU & Vaccination



Contributing to debates, initiatives and awareness campaigns at EU level



Promoting exchange of best practices & guidelines by and amongst our members



<http://eufightingflu.com/sign-the-manifesto/>
At the hearth of European communities





02

Vaccination in the community pharmacy

At the heart of communities

Through extended opening hours and night services community pharmacies are accessible

24/7



Over
9,5 billion



prescription-only medicine packs are dispensed in Europe each year



98%

of the population can reach their nearest pharmacy in less than 30 minutes



Community pharmacist's contributions to vaccination



Identifying & reminding target groups

- I.e. 65 years +, chronic patients, travel medication, children,...
- Reminders for patients – using integrated e-solutions in pharmacy software
- Registering and consulting vaccination status through shared electronic health records

Providing information and advice

- Evidence-based, unbiased and balanced information on the benefits of vaccination and vaccination schedules
- Complementing information of physicians and other HCP's
- Vaccines information as part of general prevention approach

Awareness raising and advocacy campaigns

- Utilising highly visible and geographically distributed network of pharmacies
- Participating in own initiatives & several national/EU campaigns
- Visited also by well part of the population

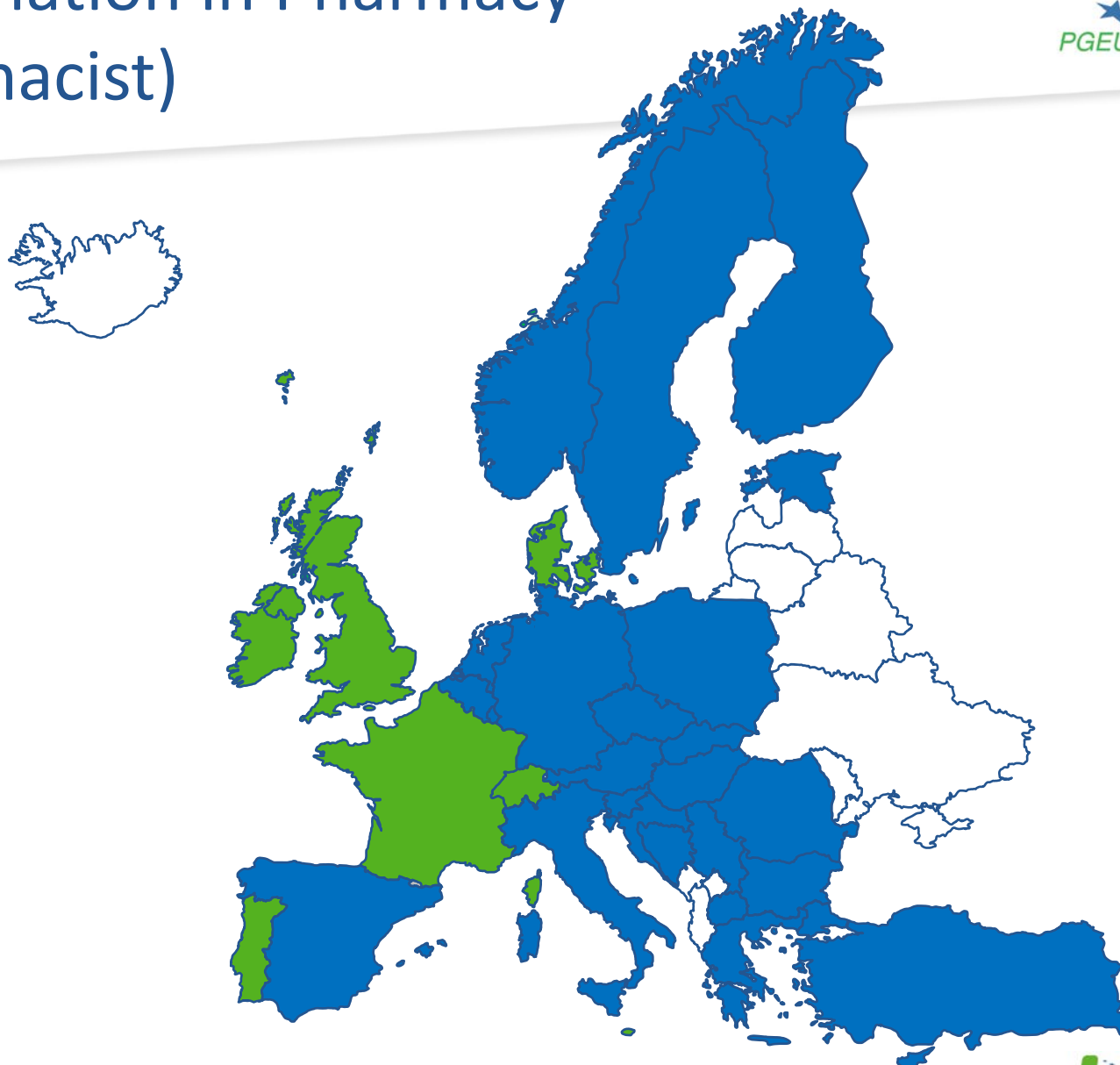
Administration of vaccines in pharmacies

- Both administration by community pharmacists as other HCP's
- Improving convenience and access for all parts of the population
- Increasing coverage through complementary efforts
- Certified training programmes



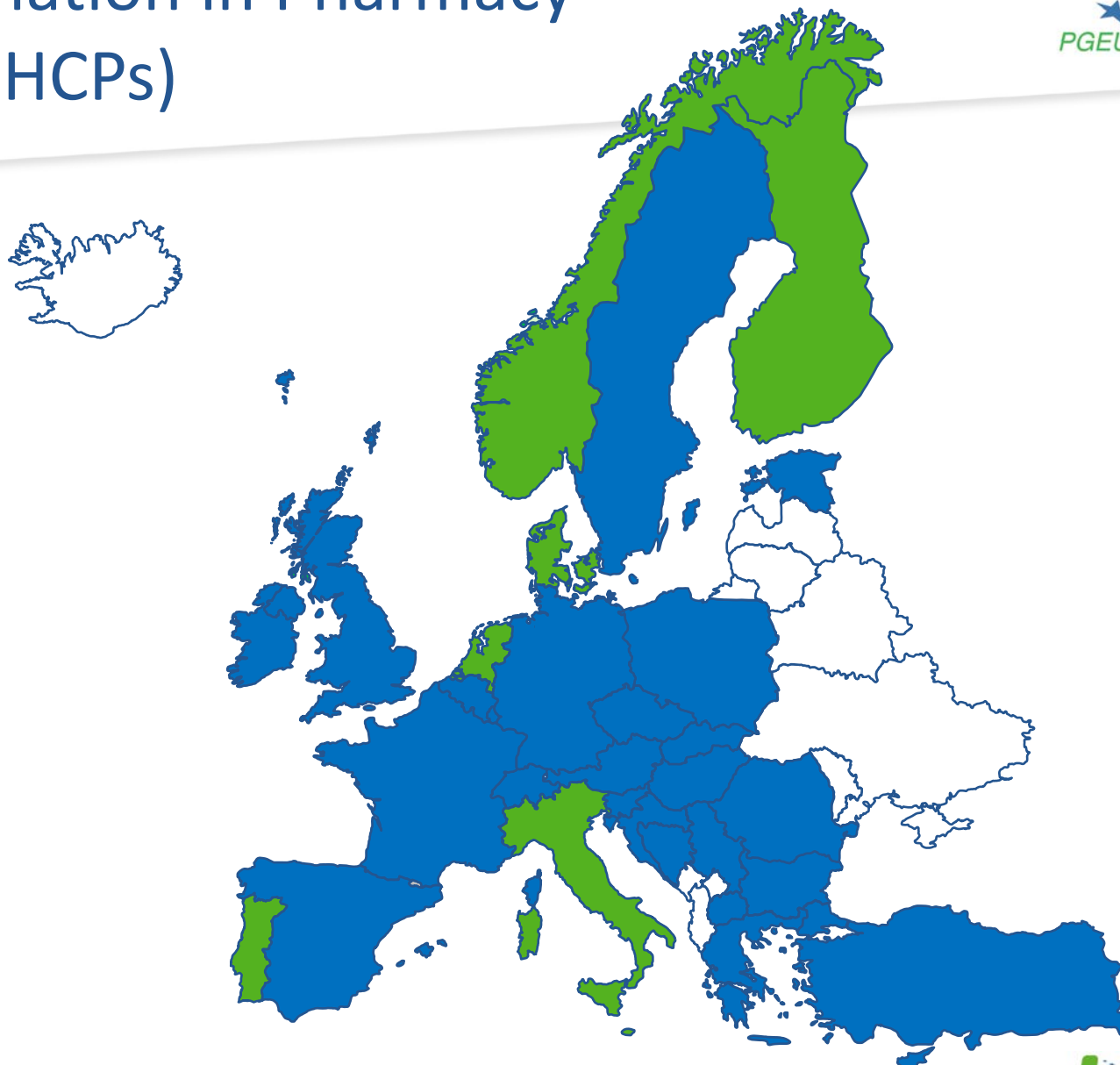
'Flu Vaccination in Pharmacy (by Pharmacist)

 Yes 7



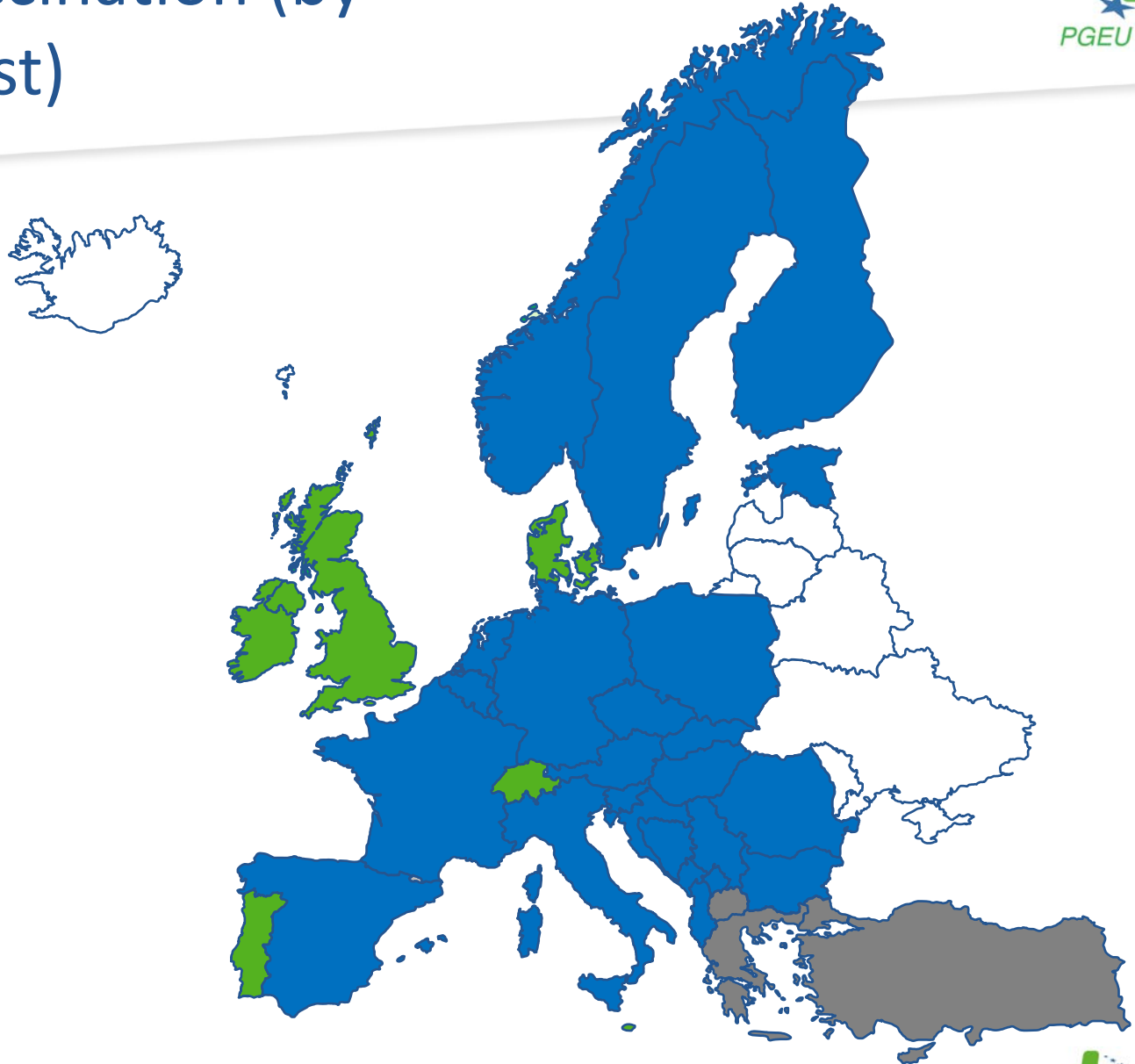
'Flu Vaccination in Pharmacy (by other HCPs)

 Yes 7



Other Vaccination (by Pharmacist)

 Yes 6



Important aspects of pharmacist-delivered vaccination

Training & education

ALL pharmacists in Europe administering vaccines must follow **certified training programmes** (often including regular refresher courses) on:

- Administration of vaccines
- Use of adrenaline (to manage anaphylaxis)
- Resuscitation procedures

Continuity of care

In most countries mandatory for pharmacist to:

- Register vaccination in **record accessible by GP** or
- **Inform GP directly**

Access and convenience

- **Most accessible** healthcare facilities
- Distribution in **rural areas**
- **Primary point of access** to HC system for certain parts of the population
- Often **no prior appointment needed**
- **High satisfaction rates** of existing vaccination services by pharmacists

Complementarity with existing services

Aims to complement existing services with the goal of facilitating access & convenience & improving population's protection through:

- Increasing **vaccination coverage**
- Reaching parts of the population which have **never been vaccinated before**
- Countering **vaccine hesitancy**



03

Case studies



NEED A FLU VACCINATION?

ask your
pharmacist first



SEASONAL FLU

What is seasonal flu (influenza)?

Seasonal flu is a highly infectious viral illness of the respiratory tract that can be life threatening.

Can flu cause serious illness?

Flu is a serious illness with most deaths occurring in people aged 65 years and over, those with long term medical conditions and pregnant women.

Is it cold or flu?

Flu symptoms come on suddenly with a fever, muscle aches, headache and fatigue. A cold is a much less serious illness than flu and usually starts gradually with a sore throat and a blocked or runny nose.

How does the seasonal flu vaccine work?

Seasonal flu vaccine helps the person's immune system to produce antibodies to the flu virus.

How safe is flu vaccine?

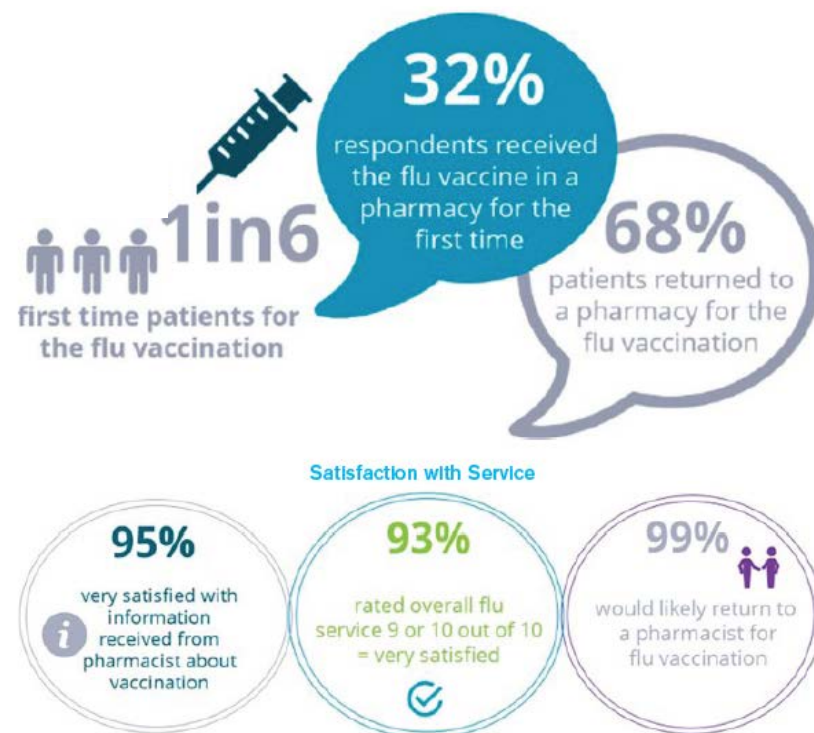
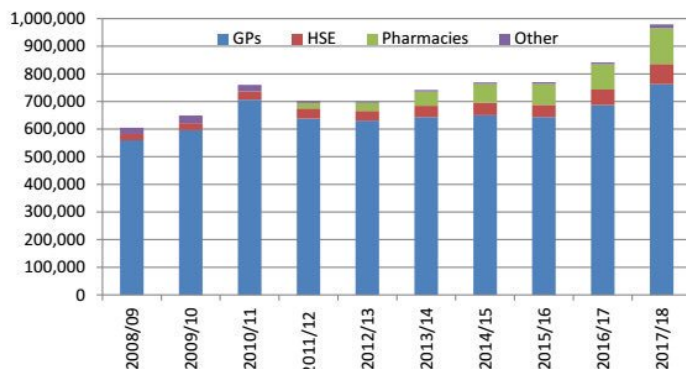
Seasonal flu vaccines have been given for more than 60 years to millions of people worldwide. Reactions are generally mild and serious side effects are very rare.

ask your
pharmacist first

Ireland

Flu Vaccination – Vaccine distribution by location 2008–2017

	2008/09	2009/10	2010/11	2011/12	2012/13	2013/14	2014/15	2015/16	2016/17	2017/18
GPs	559,910	595,974	706,680	637,900	630,650	643,516	649,890	643,500	687,208	762,900
HSE	22,720	26,130	30,390	36,780	35,680	41,290	44,850	44,690	56,503	73,050
Pharmacies	0	0	0	20,170	29,751	51,403	68,600	75,340	91,440	129,680
Other	22,580	27,416	22,860	7,650	3,580	5,650	6,040	6,060	6,418	13,130
Total	605,210	649,520	759,930	702,500	699,661	741,859	769,380	769,590	841,569	978,760



Portugal



Farmácias Portuguesas

Se faz bem, a Farmácia tem,

**MAIS VALE
VACINAR**

**DO QUE
REMEDIAR**

NA SUA FARMÁCIA, BASTAM CINCO MINUTOS PARA SE PROTEGER CONTRA A GRIPE.



Farmácias Portuguesas

Se faz bem, a Farmácia tem.

**O INVERNO ESTÁ À PORTA. E A GRIPE TAMBÉM.
VACINE-SE NA SUA FARMÁCIA.**

A gripe é uma **doença viral contagiosa** que afeta as vias respiratórias, surgindo principalmente entre novembro e março. É uma doença de curta duração, com sintomas mais intensos nos primeiros 2-3 dias que aliviam ao fim de 5 dias. A maioria das pessoas recupera após uma semana, embora a tosse e a fadiga possam durar cerca de 2 semanas.

Geralmente a gripe tem uma evolução pouco grave mas podem surgir complicações, em particular nos idosos e pessoas com doenças crónicas, como a pneumonia ou o agravamento de doenças preexistentes (ex.: asma, diabetes, doenças cardíacas), podendo levar ao internamento hospitalar.

Como se propaga o vírus da gripe? - Gotículas de saliva (tosse e espirros) e contacto direto (apertos de mão).

Quais os principais sintomas da gripe? - Febre alta, dores de cabeça, dores musculares e articulares, tosse seca e mal-estar geral.

Como diminuir o risco de transmitir ou contrair gripe? - Evitar o contacto direto com pessoas com gripe, lavar frequentemente as mãos, usar lenços de papel descartáveis, espirrar e tossir para o antebraço e nunca para as mãos.

MAIS VALE VACINAR DO QUE REMEDIAR.

A melhor forma de prevenir a gripe é a vacinação anual, pois o vírus é diferente todos os anos. Uma pessoa vacinada reduz a probabilidade de ter gripe e, caso seja contagiada, apresenta uma doença mais ligeira, com menor risco de complicações e com uma recuperação mais rápida.

QUEM DEVE SER VACINADO CONTRA A GRIPE?

Todas as pessoas beneficiam da vacina da gripe mas, de forma prioritária, devem ser vacinadas:

- Pessoas a partir dos 65 anos de idade.
- Pessoas com mais de 6 meses de idade e com doenças crónicas dos pulmões, coração, fígado ou rins; diabetes; outras situações que diminuam a resistência às infeções.
- Grávidas.
- Profissionais de saúde.

A vacina contra a gripe é simples e eficaz, não causa gripe porque não contém vírus vivos, nem apresenta efeitos secundários frequentes.

Para além de outros serviços de saúde, a vacinação pode também ser feita na sua farmácia que lhe assegura o acesso, a comodidade, a segurança e o conforto na prevenção da gripe.

**NA SUA FARMÁCIA, BASTAM CINCO MINUTOS
PARA SE PROTEGER CONTRA A GRIPE.**

1. Traga a sua receita médica da vacina, a partir de outubro.
2. Administre a sua vacina sem esperas, marcações ou demoras.
3. Em cinco minutos está prevenido contra a gripe de forma acessível, segura e cómoda.

**PORQUE MAIS VALE VACINAR DO QUE REMEDIAR.
FALE COM O SEU FARMACÊUTICO.**



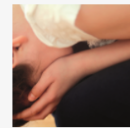
Influenza

Community pharmacists administered nearly 1 million flu vaccinations in 2016–2017

The Pharmaceutical Journal | 26 JUN 2017

Community pharmacists in England administered 950,765 flu vaccinations to patients under the national NHS Flu Vaccination Service in 2016–2017, according to official figures in the [Advanced Service Flu Report](#), published by the NHS Business Services Authority.

Top Stories



Pharmacologic treatment options for children and adolescents with autism spectrum disorder

- [Pharmacists urged to have flu jab](#)
- [The Medical Costs Act — what it means for pharma and pharmacy](#)
- [State-backed indemnity scheme for GPs to cover wider practice staff](#)
- [Daratumumab recommended for treatment of multiple myeloma in Scotland](#)

<http://www.pharmaceutical-journal.com/news-and-analysis/news-in-brief/community-pharmacists-administered-nearly-1million-flu-vaccinations-in-20162017/20203039.article>

Influenza

Flu survey finds 99% of patients would have their vaccination at a pharmacy again

The Pharmaceutical Journal | 25 SEP 2017 | By Julia Robinson

<http://www.pharmaceutical-journal.com/news-and-analysis/news/flu-survey-finds-99-of-patients-would-have-their-vaccination-at-a-pharmacy-again/20203614.article>

At the heart of European communities

Top Stories



Public Health England to consider removing travel vaccinations from NHS prescriptions

- [Pharmacists urged to have flu jab](#)
- [The Medical Costs Act — what it means for pharma and pharmacy](#)

Vaccination contre la grippe en pharmacie : l'expérimentation élargie avant une généralisation en 2019



Santé



PARTAGER






CAMPAGNE - La ministre de la Santé a confirmé ce jeudi l'élargissement de l'expérimentation de vaccination contre la grippe saisonnière en pharmacie à deux régions supplémentaires, à savoir l'Occitanie et les Hauts-De-France. Cette dernière sera généralisée à l'ensemble des régions françaises pour la campagne 2019-2020.



THANK YOU!



Pharmaceutical Group of the European Union (PGEU)

-  Rue du Luxembourg 19, 1000 Brussels, Belgium
-  +32 (0)2 238 08 18
-  pharmacy@pgeu.eu
-  www.pgeu.eu